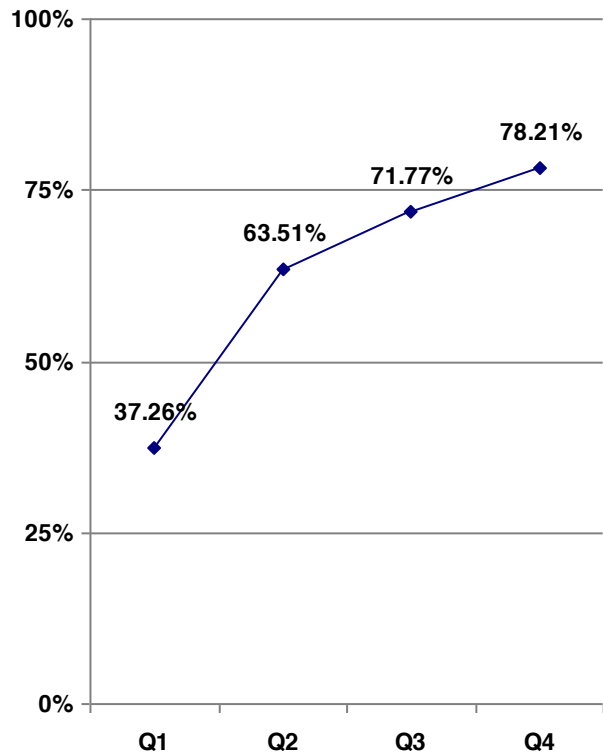


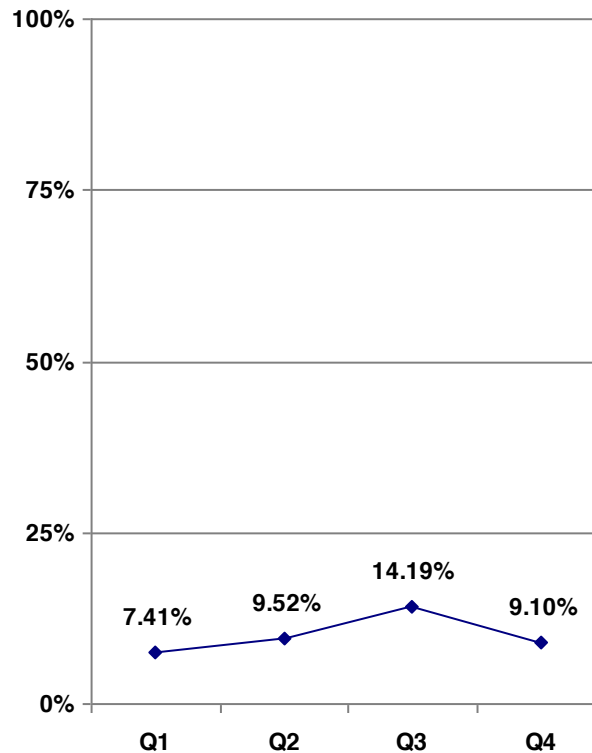
Is anyone better off?

% of Cases showing a forward movement on their Distance Travelled evaluation



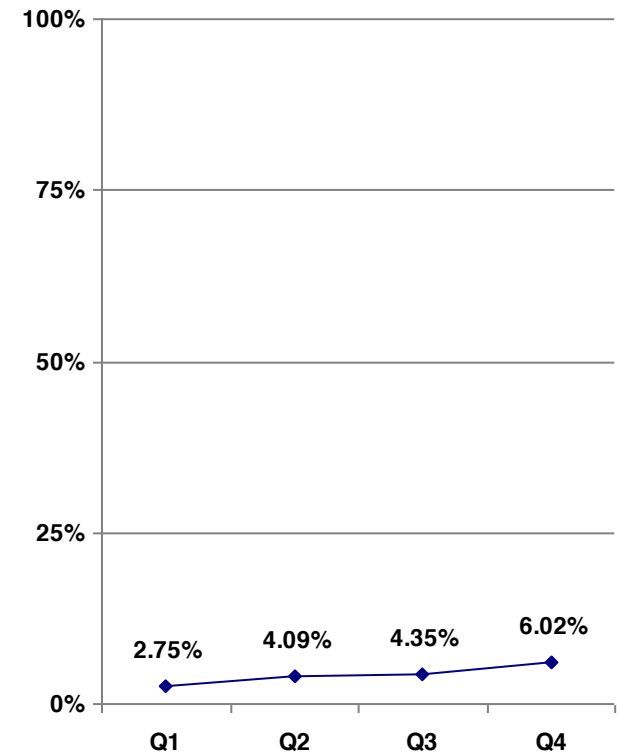
Quarter 1 = 275, Quarter 2 = 466, Quarter 3 = 546, Quarter 4 = 658

% of Cases showing no movement on their Distance Travelled evaluation



Quarter 1 = 55, Quarter 2 = 87, Quarter 3 = 97, Quarter 4 = 70

% of Cases showing a backward movement on their Distance Travelled evaluation



Quarter 1 = 31, Quarter 2 = 43, Quarter 3 = 38, Quarter 4 = 45

How much did we do?	Q1	Q2	Q3	Q4	Year
Total number of cases engaged with	4083	4156	3443	3403	15085
Number of new cases engaged with this quarter	4083	1934	1489	1518	9024
Total number of individuals engaged with	6964	8390	6434	6593	28381
Number of new individuals engaged with this quarter	6964	3862	2700	2631	16157
Number of cases affected by disability	460	628	535	433	2056
Number of baseline Distance Travelled evaluations completed	1069	1092	1012	565	3738
Number of cases closed	793	1211	1141	1219	4364

How well did we do it?	Q1	Q2	Q3	Q4	% Year
% of Cases that were worked with using a TAF approach	25.80%	33.21%	40.31%	44.34%	35.91%
% of Cases that completed an end of service Distance Travelled evaluation	33.85%	47.95%	56.86%	59.93%	49.65%
% of New cases engaged with that live in the targeted areas	40.17%	49.27%	51.45%	53.48%	48.60%
% of Cases that were signposted/referred to another agency/agencies as an exit route	18.74%	29.10%	28.52%	20.52%	24.22%
% of Cases that were signposted/referred to an EET pathway as an exit route	13.53%	16.94%	21.30%	13.92%	16.42%
% of Cases that were signposted/referred to Children's Social Services as an exit route	6.35%	11.55%	4.30%	3.47%	6.42%
% of Cases that no longer required any services upon exit	20.51%	28.44%	32.83%	37.90%	29.92%
% of Cases that were closed due to disengagement	18.00%	17.26%	23.46%	17.51%	19.06%